

# BELT SPLICES: MAXI-SPLICE SUPER® & ULTRA®

Super Strength, Ultra-Light

## ULTRA & SUPER SPLICES

THE PERFECT COMBINATION OF SUPER-STRONG & ULTRA-LIGHT.

### THE PERFECT COMBO

HEAVY DUTY ELEVATOR?

THE "SUPER" IS IDEAL FOR BELTS BETWEEN 800-1200 PIW

THE "ULTRA" FITS PERFECTLY ON BELTS UP TO 800 PIW.

### SUPER-STRONG

THE SUPER & ULTRA ARE CONSTRUCTED OF HIGH GRADE ALUMINUM, NBR RUBBER WEDGES & SS BOLTS

### ULTRA-PERFORMANCE

ULTRA & SUPER ARE ENGINEERED TO OUT-PERFORM TRADITIONAL SPLICES

### FEATURES & BENEFITS

- Large Radius for Heavy Belts
- High Grade Aluminum Construction
- Non Sparking / Corrosion Resistant
- NBR Rubber Wedges (High Temp Options Available for Bottom Wedge)



**MAXI-SPLICE®**  
**SUPER**

**MAXI-SPLICE®**  
**ULTRA**



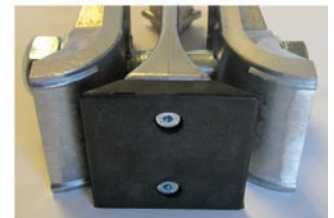
Interlocking Teeth Grip Belt



Heavy Duty Bolts



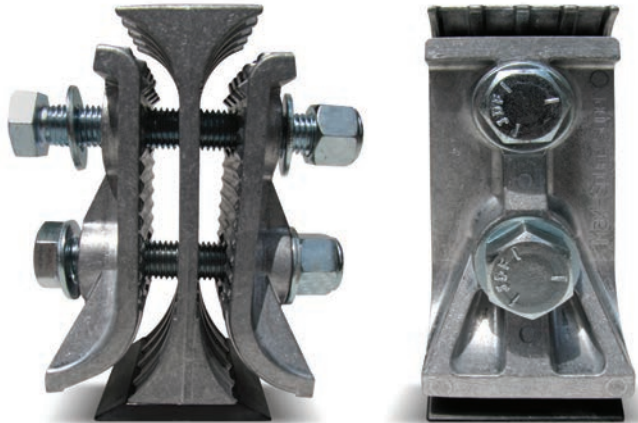
3-Piece Construction



NBR Rubber Wedge

# MAXI-SPLICE SUPER® & ULTRA®

Call 1-800-527-0657, Visit [MAXILIFT.COM](http://MAXILIFT.COM) for More Info



**MAXI-SPLICE  
SUPER**

## MAXI-SPLICE SUPER

Named for its superior design, performance and size, the **MAXI-SPLICE SUPER** (along with its counterpart the **MAXI-SPLICE ULTRA**) defines the next generation of elevator belt splices. The unique design embraces our **MAXI-SPLICE** three piece construction, with the addition of an NBR rubber wedge to protect against belt wear for long life. Designed with a larger radius for improved belt life, the larger **SUPER** has two bolts for additional clamping force and plate friction. See Specifications on Page 87.

### FEATURES

- High Grade, Lightweight Aluminum Construction
- NBR Rubber Wedge Protects Backside of Belt
- High Temp Options Available for Bottom Wedge
- Weight: 4.8 lbs. each
- Two Bolt Design
- 3/4" x 5" and 3/4" x 5-1/2" Hex Head Bolts
- Usable on Belts Rated 800-1200 PIW tensile.



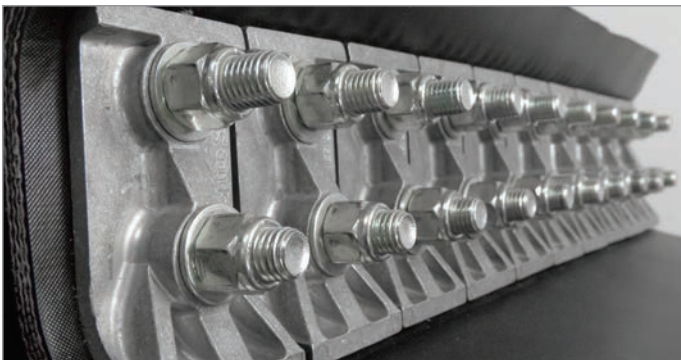
**MAXI-SPLICE  
ULTRA**

## MAXI-SPLICE ULTRA

The aptly named **MAXI-SPLICE ULTRA** is perfect companion to the larger **SUPER**. The **ULTRA** features all the advantages of the larger splice, but with a smaller frame and a single bolt design. Designed for belts up to 800 PIW, the **ULTRA** also features the **MAXI-SPLICE** three piece construction and NBR rubber wedge for protection against belt wear and longer life. Like the **SUPER**, the **ULTRA** is designed with a larger radius for improved belt life. See Specifications on Page 87.

### FEATURES

- High Grade, Lightweight Aluminum Construction
- NBR Rubber Wedge Protects Backside of Belt
- High Temp Options Available for Bottom Wedge
- Weight: 1.93 lbs. each
- One Bolt Design
- 5/8" x 4-1/2" Hex Head Bolt
- Rated for belts up to 800 PIW





# BELT SPLICES: MAXI-SPLICE® AB & CI

For More Information, Call 1-800-527-0657



## MAXI-SPLICE® AB

### MAXI-SPLICE Belt Fastening Systems

Maxi-Splice is a 3-piece elevator belt splicing device. Trusted for over 30 years, it sets the standard for all who hope to copy it. Make sure you ask for Maxi-Splice by name, and accept no substitutes. For use on PVC and rubber elevator belts. See Specifications on Page 87.

#### MAXI-SPLICE AB

- 9/16" Diameter Grade 5 Bolt
- 9/16" x 5" Hex Head Bolts
- Non-Ferrous Metal of Very High Tensile Strength
- Usable On Belts of up to 800 PIW Tensile
- Non-Sparking, Non-Corroding & Non-Rusting
- Bronze Color
- Weight: 2.9 Lbs. Each

#### MAXI-SPLICE CI

- Ferrous Metal of Moderately High Tensile Strength
- 1/2" x 5" Hex Head Bolts
- Usable on Belts of Up to 600 PIW Tensile
- Silver Color
- Weight: 2.6 Lbs. Each

### TEMPLATE TAPE - FREE

- Peel and stick directly on belt
- Improves belt-punching accuracy
- Marks hole locations for odd or even width belts
- Clearly marked in white and red lettering
- Included with every splice order

### POWER PUNCH *(Drill bits are not recommended)*

- Made with durable heat treated carbon-steel
- Reinforced blade easily cuts 1/2", 9/16", 5/8" and 3/4" diameter holes
- Sized to match your exact splice
- Use with a hand-held mallet, impact wrench, or drill
- Always wear eye protection

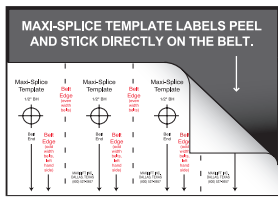
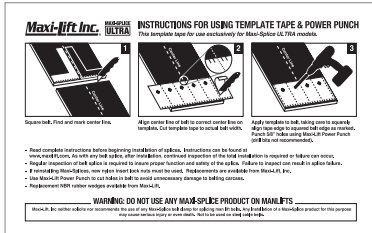


ILLUSTRATION DEPICTS USAGE ON AN 8 INCH BELT.



## WARNING: DO NOT USE MAXI-SPLICE ON MANLIFTS!

Please read all instructions before installing any Maxi-Splice product. Instructions can be found at [www.maxilift.com](http://www.maxilift.com). Failure to follow installation instructions may result in splice failure. As with any belt splice, continuous, regular inspections are required or failure can occur.

Never mix Maxi-Splice products on a single installation. Reduced or uneven clamping pressure may occur compromising splice integrity and could result in splice failure.

Maxi-Lift neither solicits nor recommends the use of any Maxi-Splice belt clamp for splicing man-lift belts. Maxi-Splices were neither designed for nor tested for this purpose. Any installation of a Maxi-Splice product for this purpose may result in splice failure causing serious bodily harm or even death. Do not use on steel cable belts.

Do not re-use nylon insert lock nuts when reinstalling Maxi-Splices. Please use new nylock nuts for reinstallation. Replacements are available from Maxi-Lift.


For applications exceeding 250° F, nylon insert lock nuts may not be used, as this temperature range exceeds the manufacturer's threshold for nylon integrity. Compression locking nuts should be utilized instead.

While the AB and CI Maxi-Splice may be used on wing pulleys, they may contribute to wear on the backside of the belt at the splice. It is the user's responsibility to inspect the splice at regular maintenance intervals to prevent failure. Noise may also be heard as the splice contacts the wings of the pulley.

# MAXI-LIFT BELT SPLICES

## Splice Comparison

### BELT SPLICE TECHNICAL DATA SHEET

											
		MAXI-SPLICE <sup>®</sup>	MAXI-SPLICE <sup>®</sup>	MAXI-SPLICE <sup>®</sup>	MAXI-SPLICE <sup>®</sup>	MAXI-SPLICE <sup>®</sup>	MAXI-SPLICE <sup>®</sup>	MAXI-SPLICE <sup>®</sup>	MAXI-SPLICE <sup>®</sup>	MAXI-SPLICE <sup>®</sup>	MAXI-SPLICE <sup>®</sup>
PART DETAILS	Product	MAXI-SPLICE	MAXI-SPLICE	MAXI-SPLICE	MAXI-SPLICE	MAXI-SPLICE	MAXI-SPLICE	MAXI-SPLICE	MAXI-SPLICE	MAXI-SPLICE	MAXI-SPLICE
	Brand	CI	AB	ULTRA	SUPER	TITAN					
	Part No.	CI5	AB5	ULTRA5	SUPER5	TITAN					
SPLICE CONSTRUCTION	Color	Silver	Manganese Bronze	Silver	Silver	Silver					
	Construction	3 Piece Mechanical Clamping Device	3 Piece Mechanical Clamping Device	3 Piece Mechanical Clamping Device with NBR (Nitrile) Rubber Wedge	3 Piece Mechanical Clamping Device with NBR (Nitrile) Rubber Wedge	3 Piece Mechanical Clamping Device with NBR Rubber Wedge					
	Metal Material	Galvanized Cast Iron	Manganese Bronze	Aluminum	Aluminum	Aluminum					
	Metal Description	Ferrous Cast Iron	Non-Ferrous Bronze	High Grade, Lightweight Aluminum	High Grade, Lightweight Aluminum	High Grade, Lightweight Aluminum					
	Rubber Material	None	None	Replaceable NBR Rubber Wedge	Replaceable NBR Rubber Wedge	Replaceable NBR Rubber Wedge					
SPLICE SPECIFICATIONS	Weight (lbs.)	2.60	2.90	1.93	4.80	Per Application					
	Length	3"	3"	4-1/2"	6-1/4"	6"					
	Width	2"	2"	2-1/2"	3"	Per Application					
	PIW Rated	Up to 600 PIW Tensile	Up to 800 PIW Tensile	Up to 800 PIW Tensile	800-1200 PIW Tensile	Over 1200 PIW					
	Recommended Belt Thickness	1/4" to 5/8"	1/4" to 5/8"	1/4" to 5/8"	3/8" to 3/4"	Per Application					
BOLT SPECIFICATIONS	No of Bolts	1	1	1	2	Per Application					
	Bolt Grade	Grade 5 Hex Head Bolt	Grade 5 Hex Head Bolt	Grade 5 Hex Head Bolt	Grade 5 Hex Head Bolt	M16 10.9 Hex Head Bolt					
	Bolt Diameter (Inches)	1/2"	9/16"	5/8"	3/4"	Per Application					
	Bolt Length (Inches)	5"	5"	4-1/2"	5" and 5-1/2"	Per Application					
	Washers	Yes	Yes	Yes	Yes	Yes					
	Nuts	Nylock	Nylock	Nylock	Nylock	Oval Lock Nut					
	Recommended Torque *	75 ft./lbs.	100 ft./lbs.	125 ft./lbs.	150 ft./lbs.	Per Application					
	Template Tape Included	Yes	Yes	Yes	Yes	Requires Special Template					
SHIMS	Required Shims Per Belt Thickness	N/A	N/A	Under 5/16" - No Shims 5/16" to 3/8" - 1 Shim 3/8" to 5/8" - 2 Shims	Under 1/2" - No Shims 1/2" to 5/8" - 1 Shim 5/8" to 3/4" - 2 Shims	N/A					
TEMPERATURE RATINGS	Max. Operating Temps	600° F / 350° C	500° F / 260° C	200° F / 93° C (NBR Rubber Wedge Limiting Factor) - Alternative Wedges Available for Higher Temperatures	200° F / 93° C (NBR Rubber Wedge Limiting Factor) - Alternative Wedges Available for Higher Temperatures	320° F / 160° C (HNBR Hydrogenated Nitrile Butadiene Rubber Wedge Limiting Factor)					
	Nylock Nut Max. Temp	250° F	250° F	250° F	250° F	320° F					
MINIMUM HEAD PULLEY	Agricultural (High Speed) **	12"	12"	24"	30"	48"					
	Industrial (Centrifugal/Gravity)	12"	12"	20"	36"	48"					
BUCKET PROJECTION	Minimum Recommended	4"	4"	5"	7"	8"					
FEATURES/BENEFITS		Strong, Standard, Mechanical Splice	Non-Sparking, Non-Corroding, Non-Rusting	Non-Sparking, Non-Corroding, Non-Rusting, Longer Belt Life	Non-Sparking, Non-Corroding, Non-Rusting, Longer Belt Life	Non-Sparking, Non-Corroding, Non-Rusting, Longer Belt Life					

\* When torquing splice bolts, do not use impact wrench as over-torquing will cause both belt and splice failure. In addition, under torquing could lead to insufficient clamp pressure and could create splice failure, and tracking issues. \*\* On smaller pulleys, the metal shims must be installed correctly, or the rubber wedge could fail. Customer is responsible for checking the splices on a consistent basis for correct torque during splice operation. Do not reuse hardware (bolts, nylock or oval nuts) when reinstalling splices. Please always read Maxi-Lift Installation Instructions and apply template tape when installing splices for correct installation. See website for more details. Do not use Maxi-Lift splices on any type of belt manlifts.

U.S. Utility Patent: "U.S. Pat. 9,605,730 B2. U.S. Design Patent: "U.S. Des. Pat. D724,289 S. European Patent Application No. 15154390.7